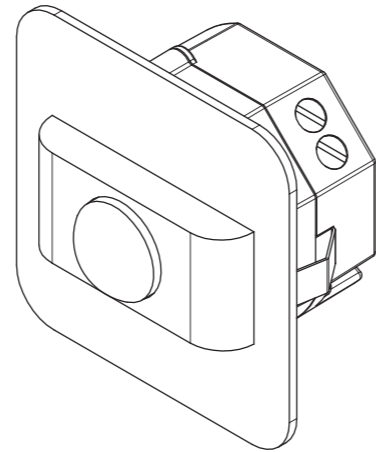


SALSA

SKOFF

PIR 120° MOTION SENSOR

10 V DC



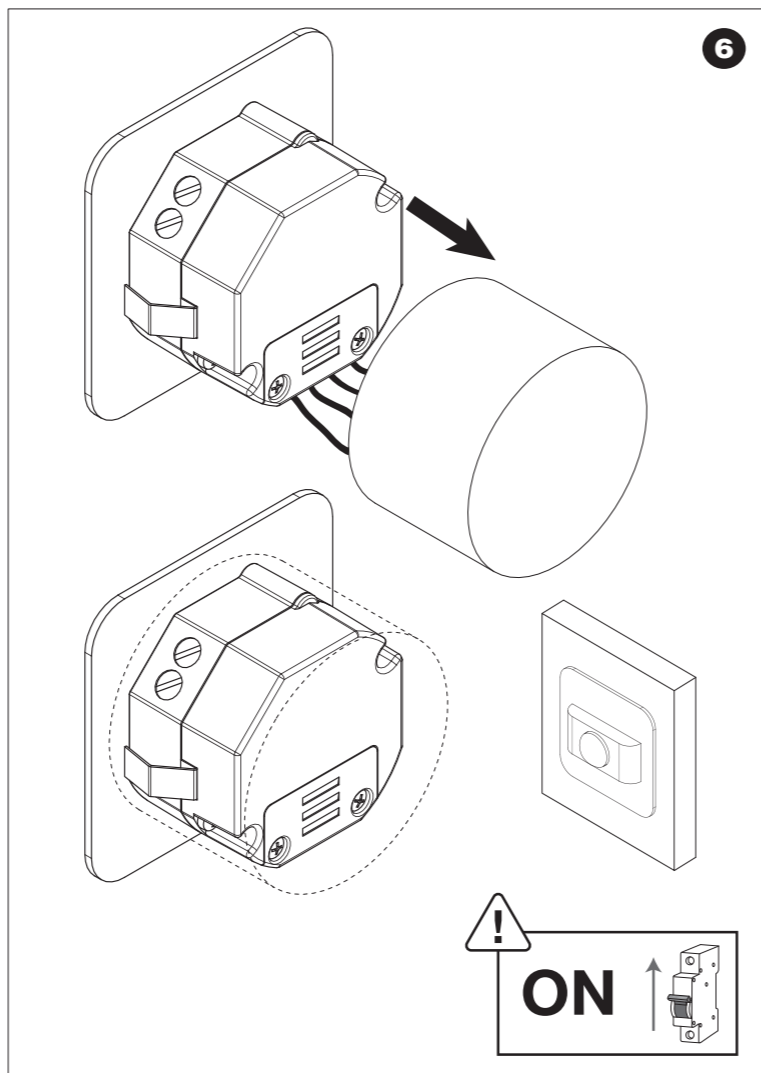
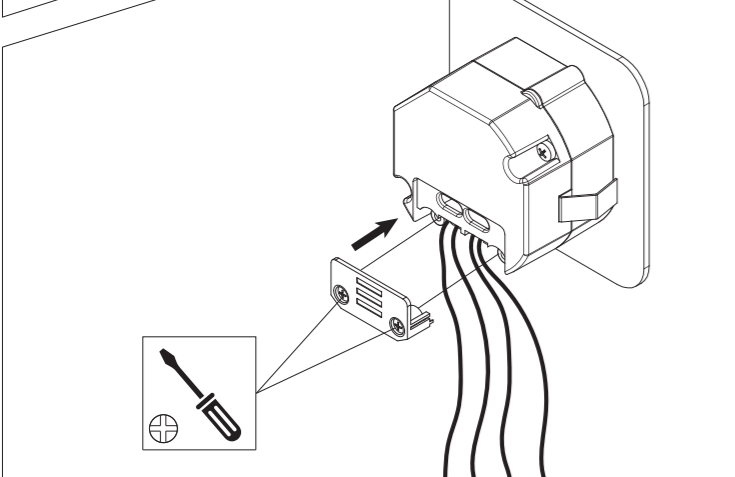
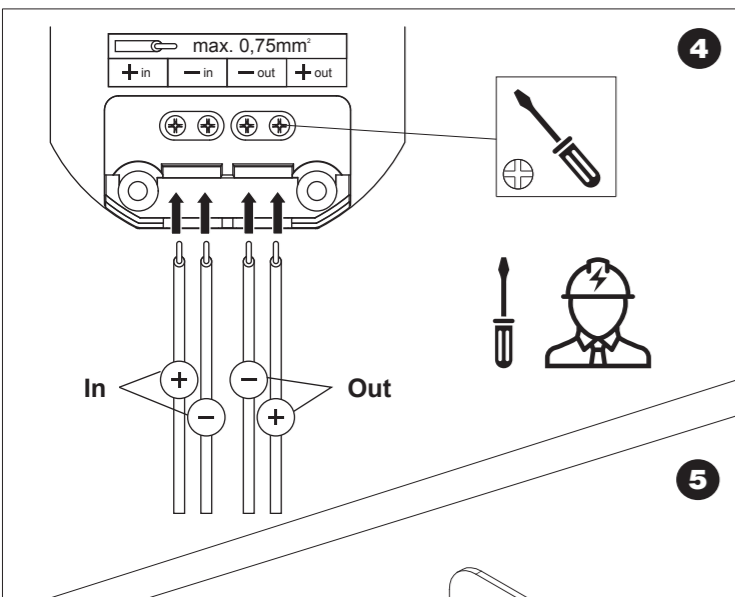
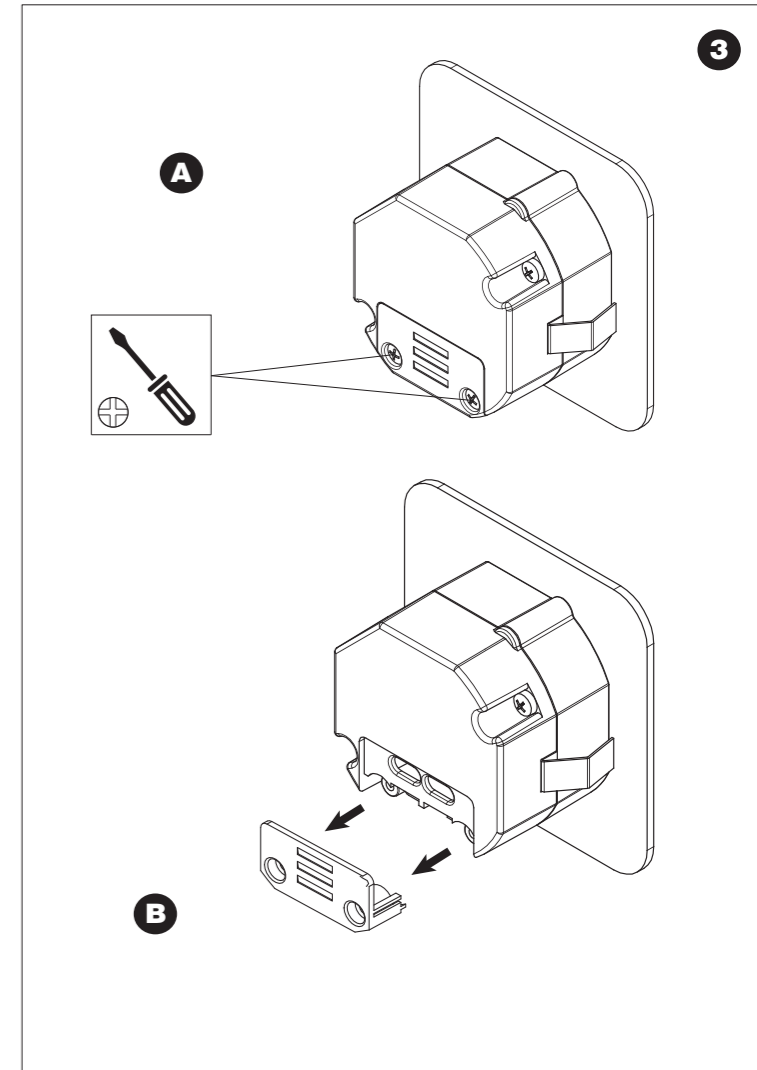
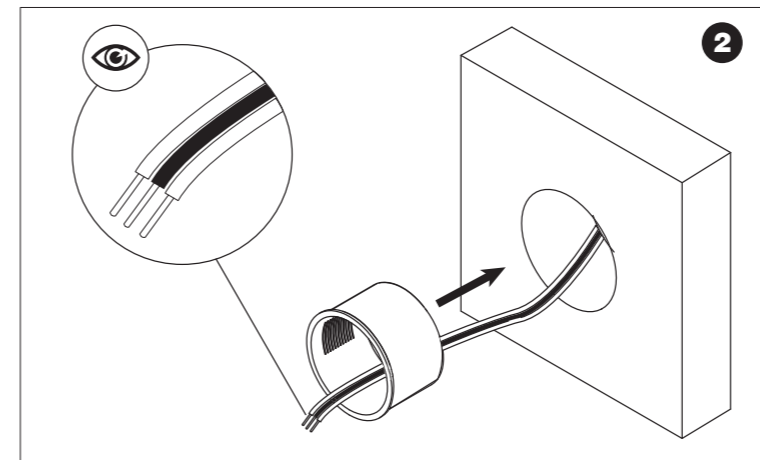
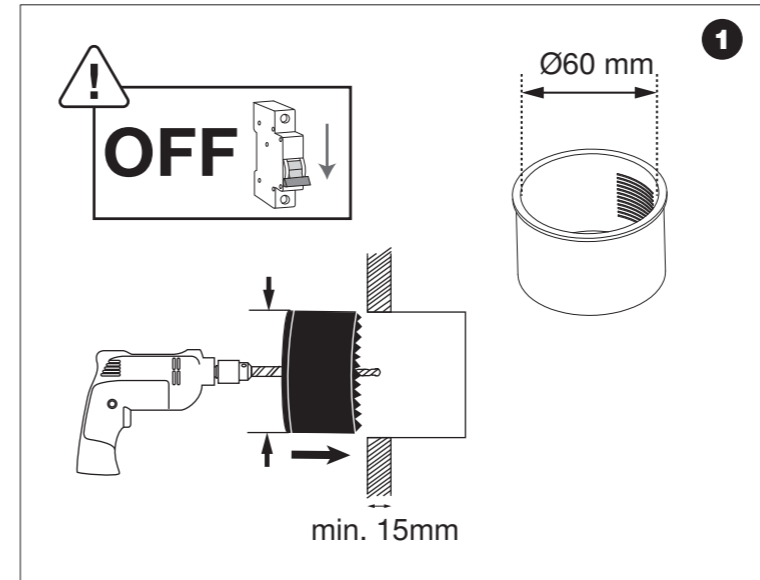
Made in Poland

Wyprodukowano przez:
Manufacturer:
Produziert von:

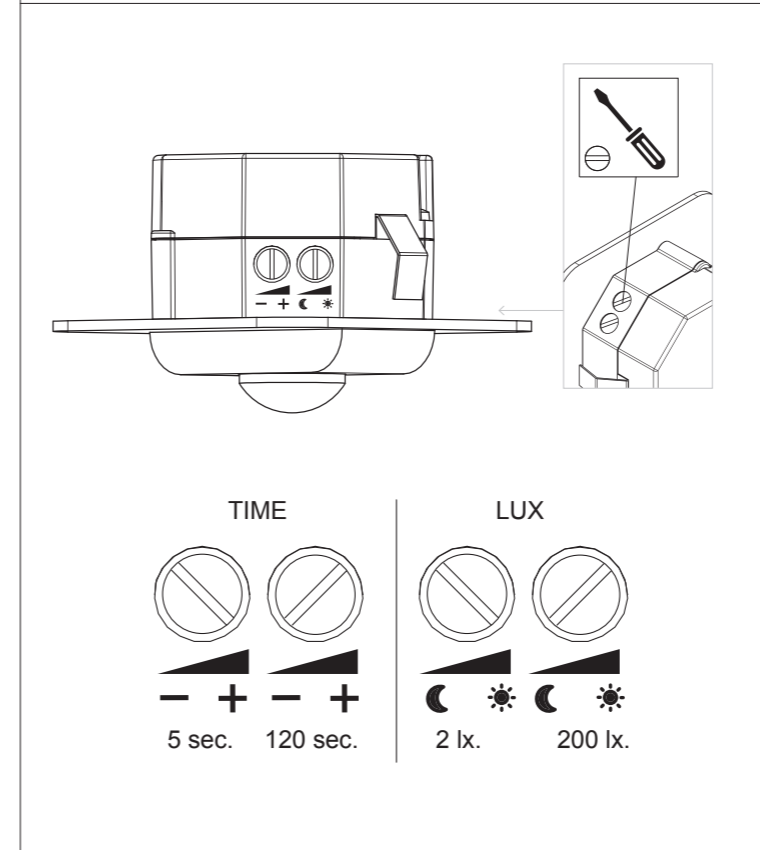
SKOFF sp. z o.o.
ul. Legionów 243D
43-500 Czechowice-Dziedzice,
Poland

ver.07/2022

- | | | |
|-------------------------------------|-------------------------------------|---------------------------------|
| EN Installation instructions | CZ Pokyny pro montáž | NL Montage-instructies |
| PL Instrukcja montażu | ES Instrucciones de montaje | RUS Инструкции по сборке |
| DE Montageanleitung | FR Instructions d'assemblage | SK Pokyny pre montáž |



- | | | |
|--|-------------------------------------|--------------------------------|
| EN Utility settings | CZ Nastavení nástroje | NL Nuttige instellingen |
| PL Ustawienia użytkowe | ES Configuración de utilidad | RUS Полезные настройки |
| DE Dienstprogrammmeinstellungen | FR Paramètres d'utilitaire | SK Nastavenia pomôcky |



- | | | |
|-------------------------------|----------------------------------|------------------------------|
| EN Connection diagram | CZ Schéma připojení | NL Aansluitschema |
| PL Schemat podłączenia | ES Diagrama de conexión | RUS Схема подключения |
| DE Anschlussdiagramm | FR diagramme de connexion | SK Schéma pripojenia |

